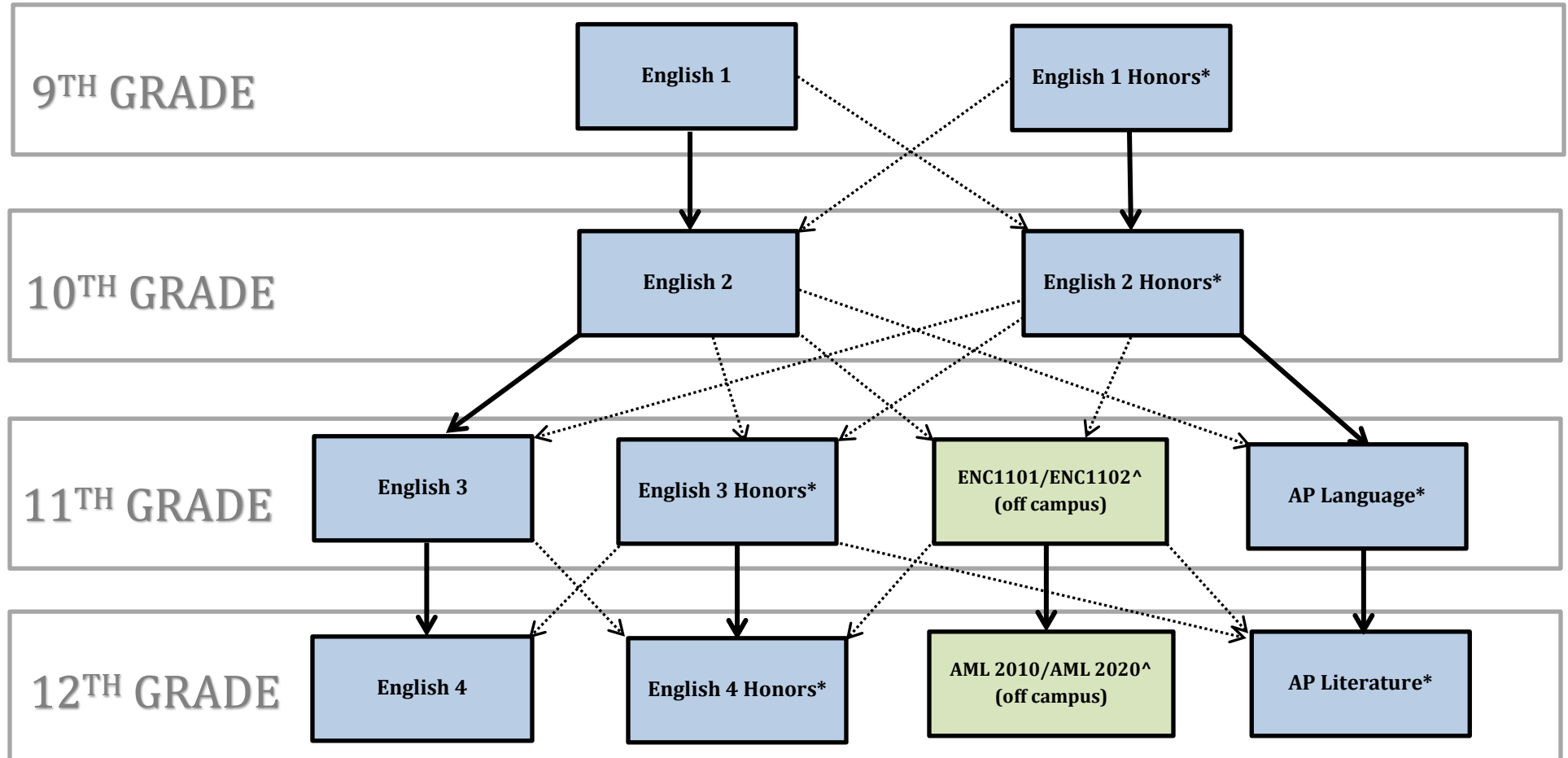


# LANGUAGE ARTS PROGRESSION

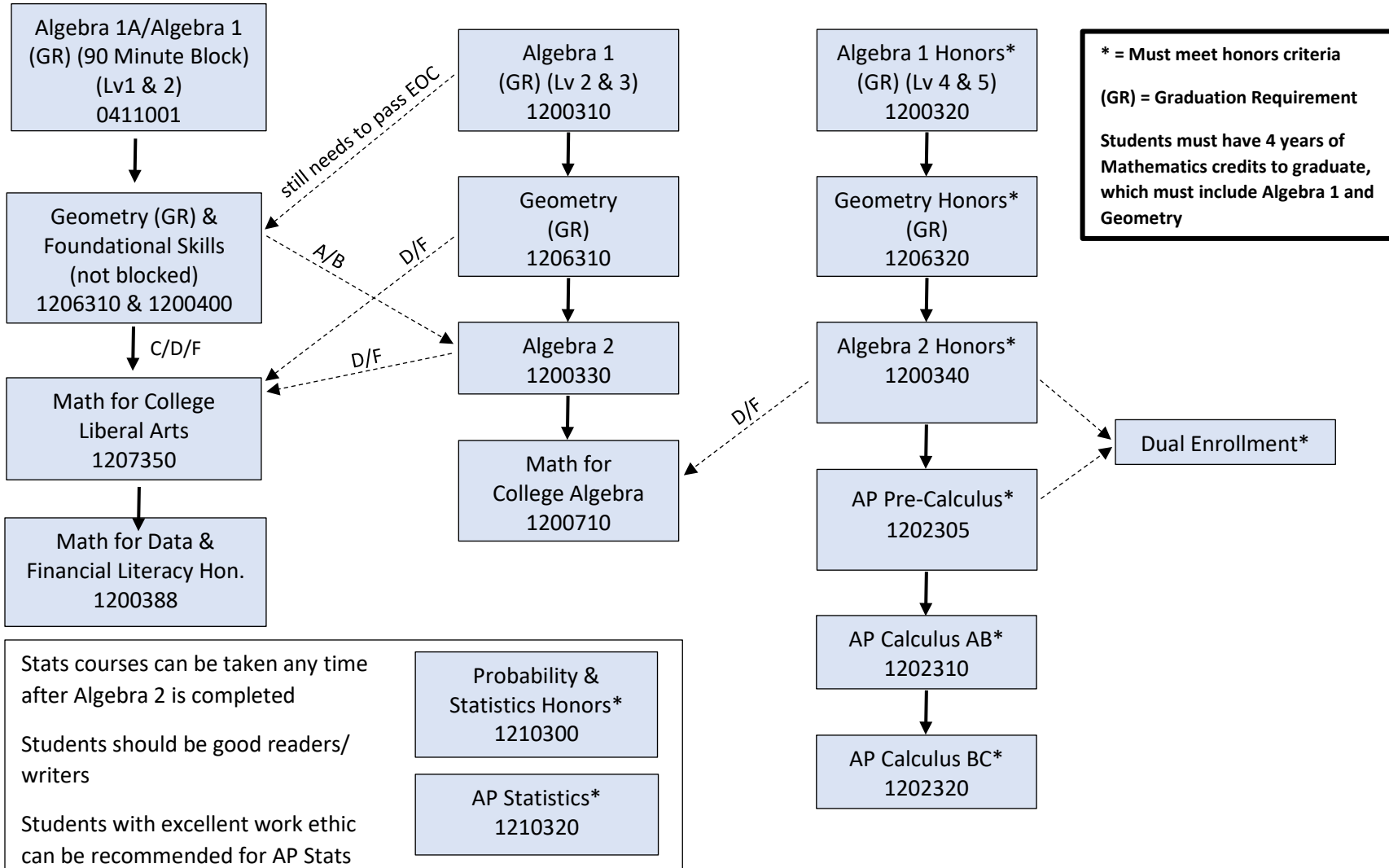
-Bold lines indicate preferred pathway



\* = Must meet honors criteria  
^ = Teacher/Administrative Recommendation Required

# MATH PROGRESSION

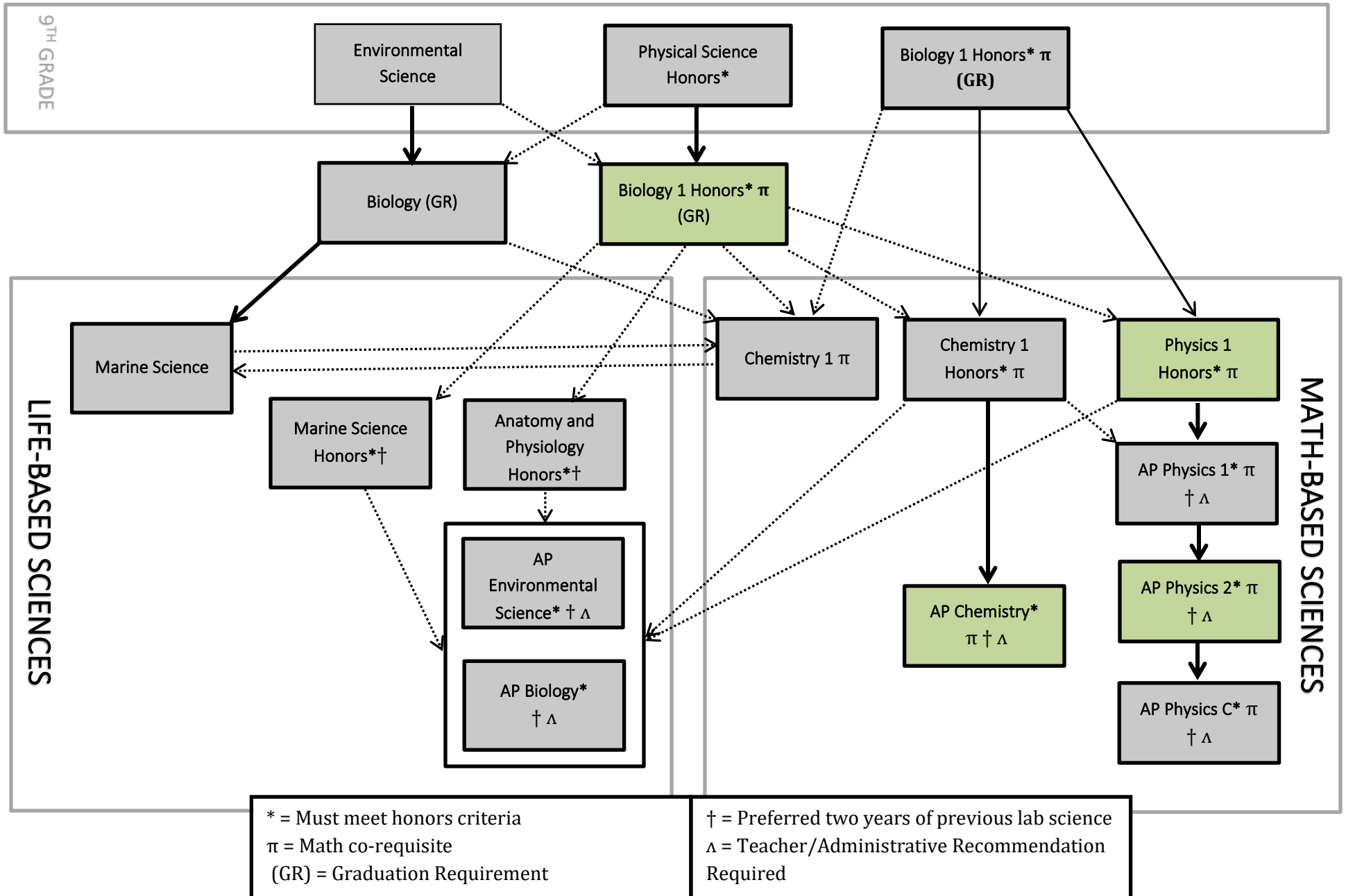
Course placement based on prerequisites (not grade level)



# SCIENCE PROGRESSION

-Bold lines indicate preferred pathway

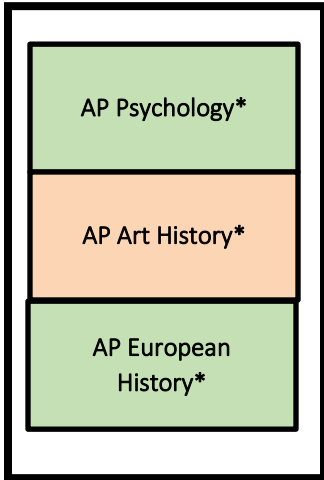
-Course placement dependent on pre-requisites (not grade level)



# SOCIAL STUDIES PROGRESSION

-Bold lines indicate preferred pathway

## ELECTIVES



\* = Must meet honors/AP criteria  
 π = Math Co-Requisite Recommended (Pre-Calculus Honors)  
 (GR) = Graduation Requirement  
 ^ = Must meet Dual Enrollment Criteria

Students must have 3 credits of Social Studies to graduate (that must include World History, American History, Government, and Economics)

