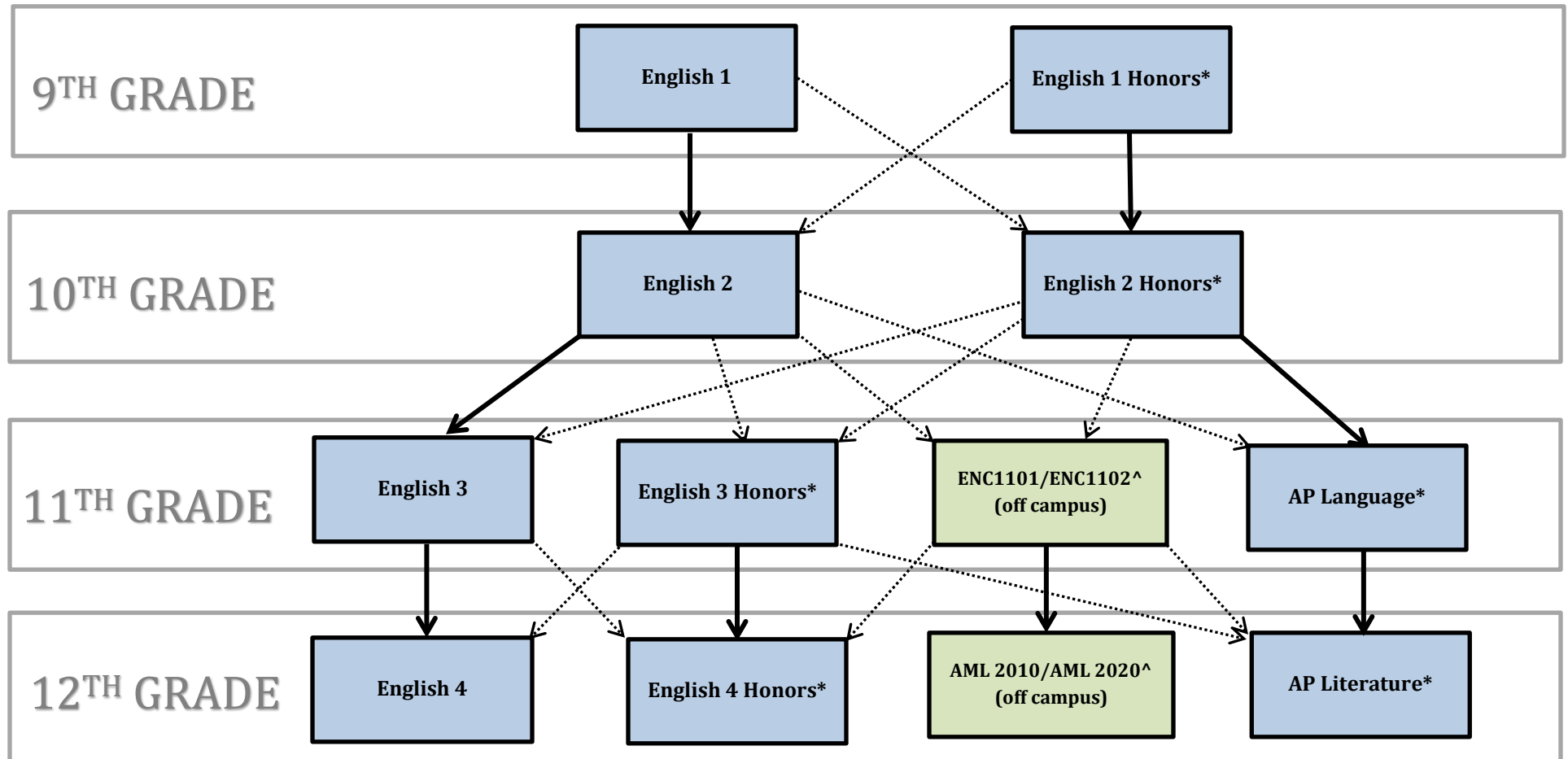


LANGUAGE ARTS PROGRESSION

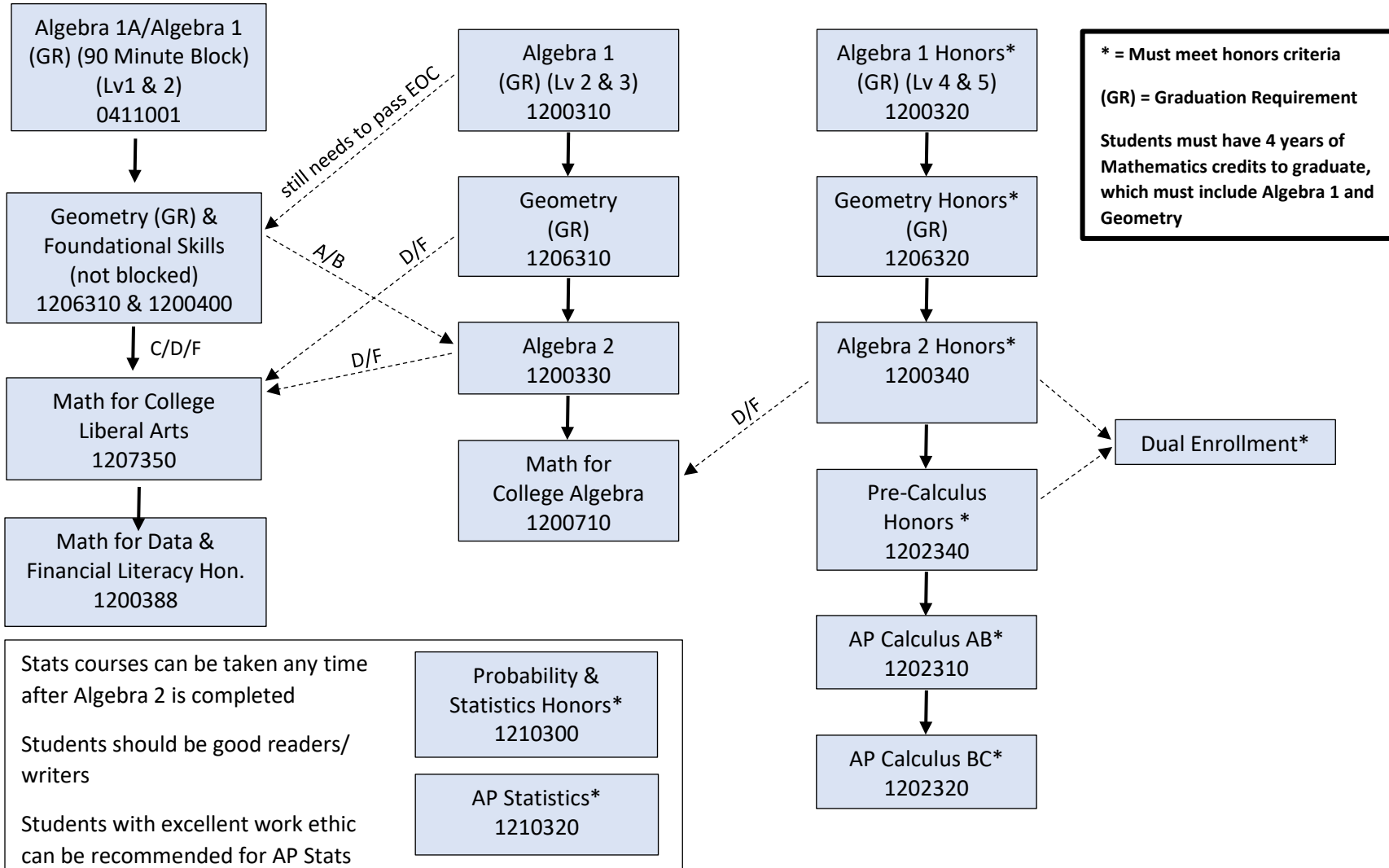
-Bold lines indicate preferred pathway



* = Must meet honors criteria
 ^ = Teacher/Administrative Recommendation Required

MATH PROGRESSION

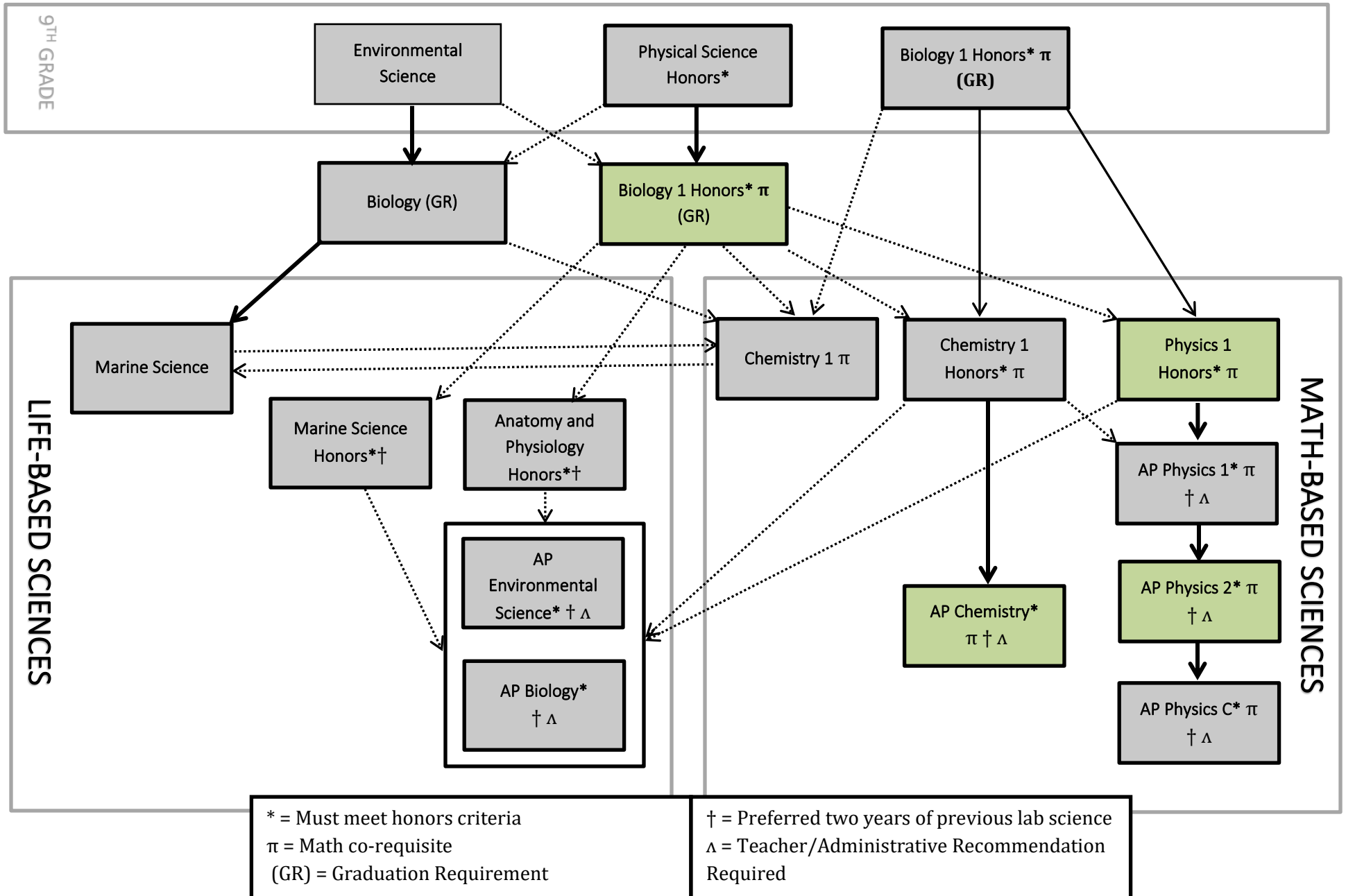
Course placement based on prerequisites (not grade level)



SCIENCE PROGRESSION

-Bold lines indicate preferred pathway

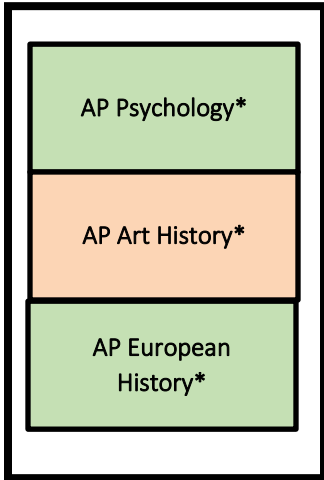
-Course placement dependent on pre-requisites (not grade level)



SOCIAL STUDIES PROGRESSION

-Bold lines indicate preferred pathway

ELECTIVES



* = Must meet honors/AP criteria
 π = Math Co-Requisite Recommended (Pre-Calculus Honors)
 (GR) = Graduation Requirement
 ^ = Must meet Dual Enrollment Criteria

Students must have 3 credits of Social Studies to graduate (that must include World History, American History, Government, and Economics)

