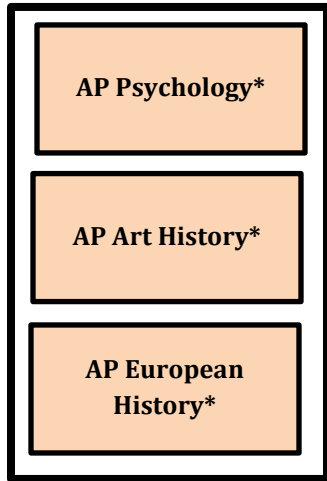


SOCIAL STUDIES PROGRESSION

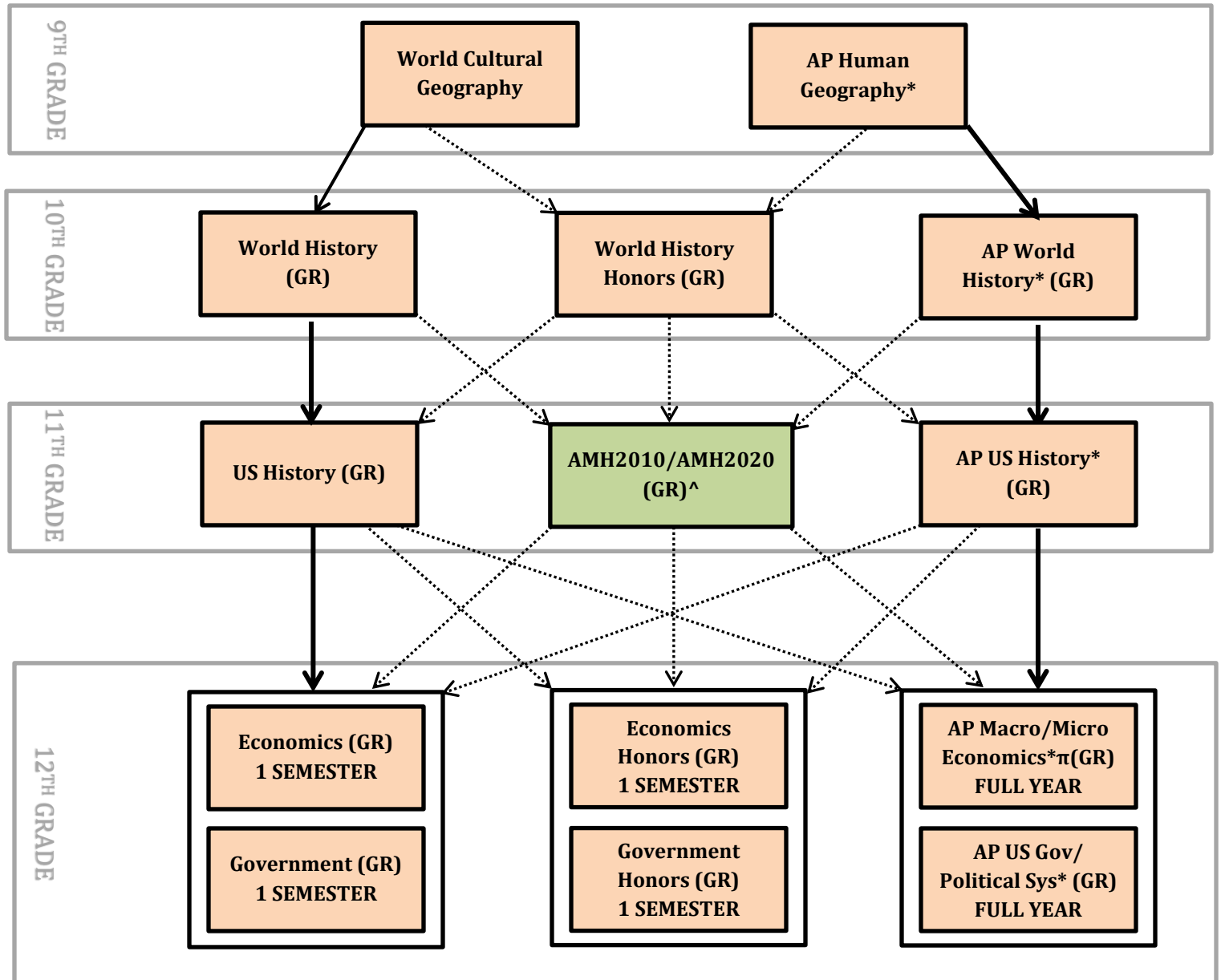
-Bold lines indicate preferred pathway

ELECTIVES



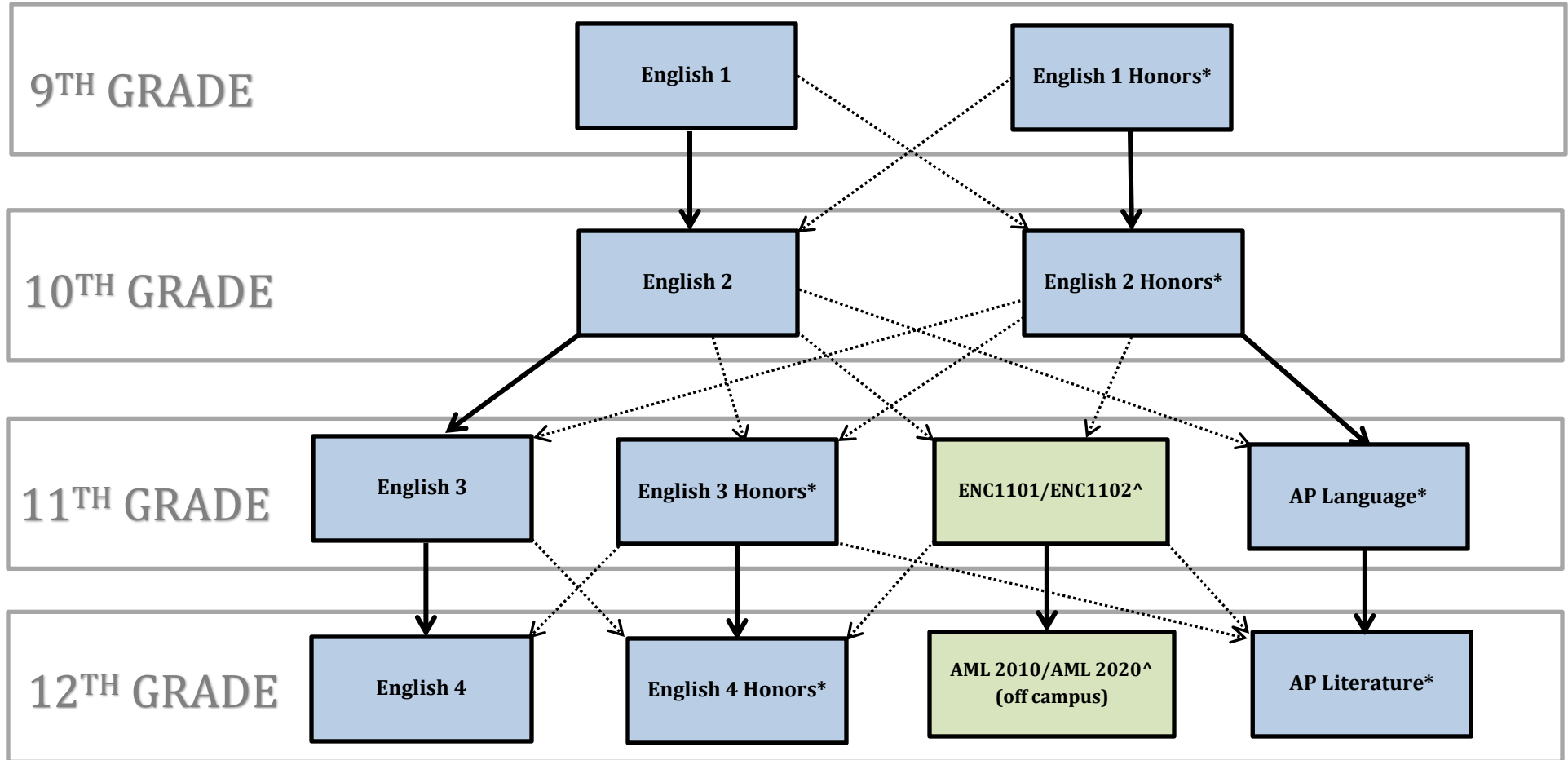
* = Must meet honors/AP criteria
 π = Math Co-Requisite Recommended (Pre-Calculus Honors)
 (GR) = Graduation Requirement
 ^ = Must meet Dual Enrollment Criteria

Students must have 3 credits of Social Studies to graduate (that must include World History, American History, Government, and Economics)



LANGUAGE ARTS PROGRESSION

-Bold lines indicate preferred pathway

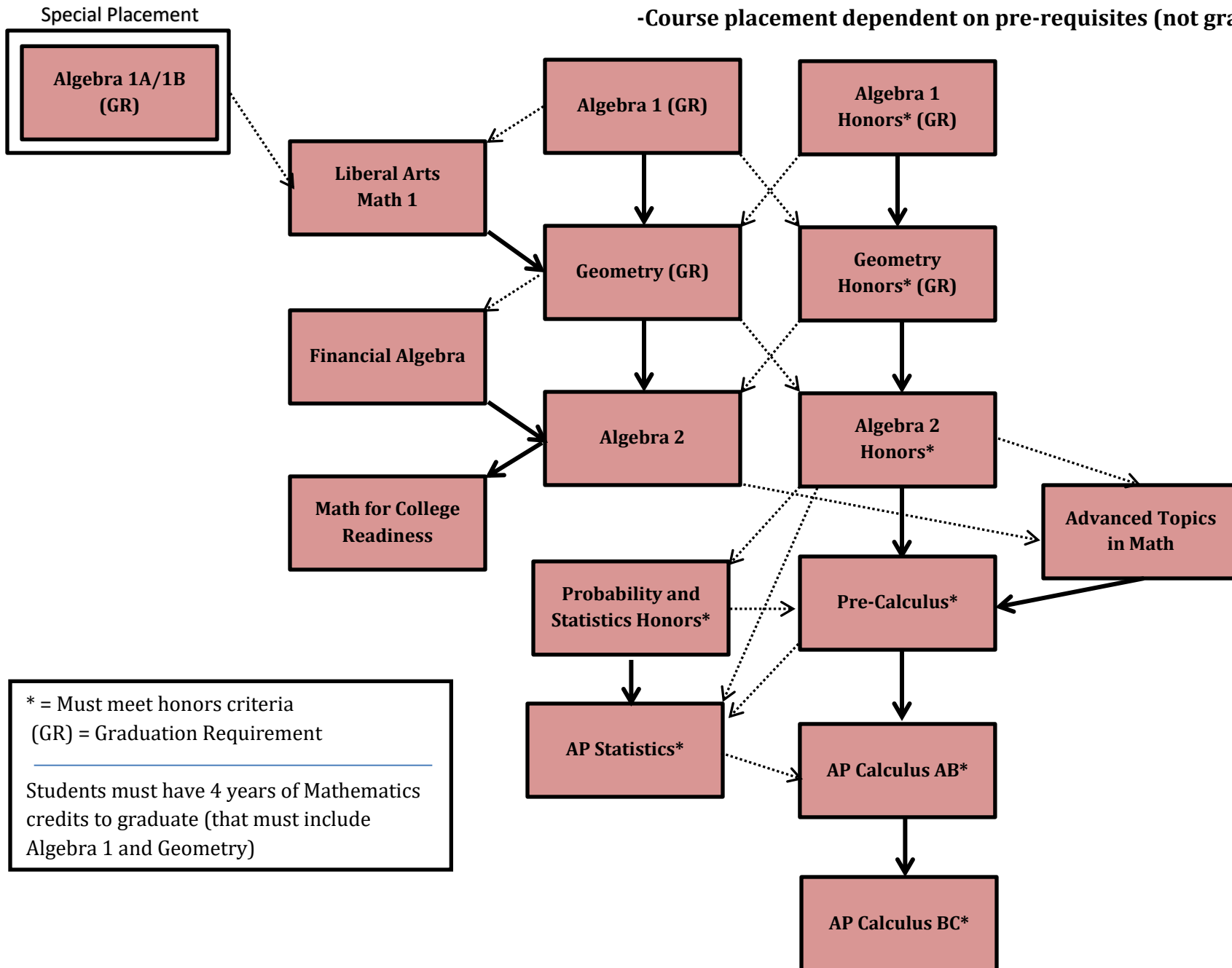


* = Must meet honors criteria
 ^ = Must meet Dual Enrollment Criteria
 Students must have 4 years of English credits to graduate.

-Bold lines indicate preferred pathway
 - Rigor of coursework increases from left to right

MATH PROGRESSION

-Course placement dependent on pre-requisites (not grade level)



* = Must meet honors criteria
 (GR) = Graduation Requirement

Students must have 4 years of Mathematics credits to graduate (that must include Algebra 1 and Geometry)

SCIENCE PROGRESSION

-Bold lines indicate preferred pathway

-Course placement dependent on pre-requisites (not grade level)

